

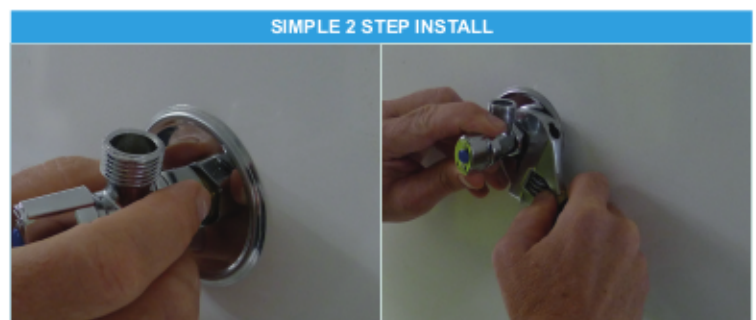
# LOOSE NUT

**INSTALL TO THE RIGHT POSITION FIRST TIME - EVERYTIME!**

The innovative design of the rotating nut means the outlet is always in the desired position for ease of connection.

The cone washer seals on the inside of the brass nipple, meaning Teflon Tape or Hemp is not required, minimizing the risk of leakage.

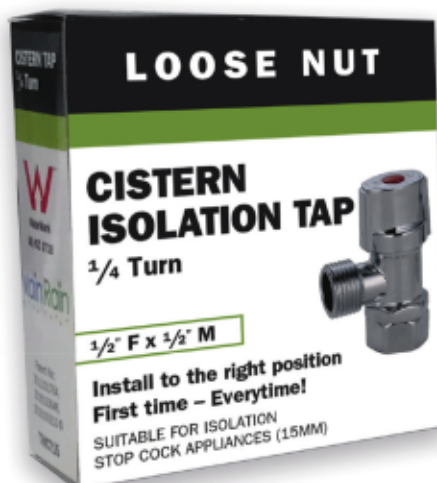
- ✓ Quick to install
- ✓ Rotatable and compact
- ✓ No Teflon tape or Sealant required
- ✓ Great for confined spaces
- ✓ Hot and Cold Indicators included
- ✓ Inbuilt check valve



**SIMPLE 2 STEP INSTALL**

Align stop outlet to the correct position

Screw on Swivel nut (with cone washer) to the threaded nipple. Then tighten with a wrench.



CISTERN TAP  
CODE: LNCTCV15



COMBO DISHWASHER TAP  
CODE: LNCDWCV1520



WASHING MACHINE TAP  
CODE: LNWMCV1520

Ph: 1300 493 359  
24 Harcourt Road, Altona VIC 3018  
[www.hydroflowaus.com.au](http://www.hydroflowaus.com.au)

Patent numbers 2011 101764, 2016100210, 2016100646

**HYDROFLOW**  
DISTRIBUTORS (AUST) PTY LTD